

## **Using the Canon Print Driver SDK and Fax Driver SDK**

The Canon Printer and Fax Driver SDKs can be used to create **custom user interfaces (UIs) that streamline workflow involving printing and faxing**, and **target the particular needs of users**.

Printer and Fax settings are normally changed using the Printer and Fax Driver UIs. The Driver UIs are invoked when the user selects the “Print” command while viewing a document. For example, in MS WORD, the user selects “Print” under the “File” menu in the toolbar. The user can then select to print double-sided with stapling, for example, or to fax to a particular recipient using a particular cover sheet.

The Canon Printer and Fax Driver SDKs allow the same **settings to be made programmatically from within an application written in VB or VC++** without invoking the Driver UI.

**Note that the Printer and Fax Drivers cannot be altered in any way. The SDKs can be used only to make Print and Fax settings from within an application. T**

The SDKs are intended for use in Windows applications only. Printing and faxing usually require the use of Win 32 API. Additionally, printing different document types (MS WORD, MS Excel, Adobe PDF, etc.) requires the use of document-specific print commands.

The following are two examples of UIs created as part of separate custom Windows applications. The way the UIs are invoked depends on the way the custom applications are designed. The UIs in this case were created using VB. The code behind the UIs uses the Canon Printer and Fax Driver SDKs to select printer and fax settings.

**Canon Custom Print Using Printer and Fax SDK**

**Select Service Type:**

**New Service Request**

- 1 Pink Copy Stapled
- 1 Blue Copy Stapled
- Fax to Service

**Follow-Up Service Request**

- 1 Green Copy Three-Hole Punch
- 1 Yellow Copy Double-Sided
- Fax to Service
- Fax to Accounting

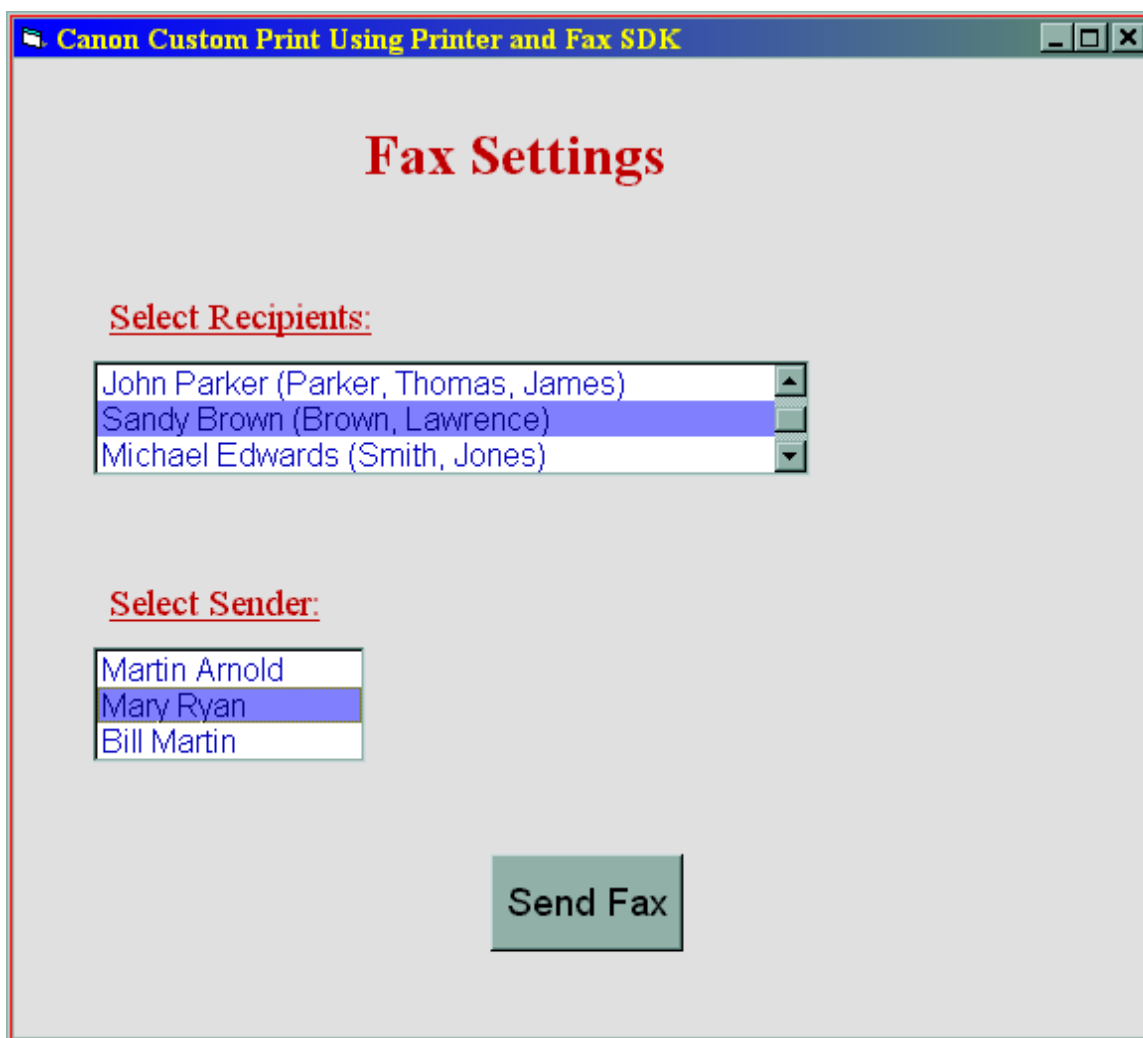
**Print**

### Example 1: Processing Service Requests

Scenario: An office processes service requests. Users enter service request information using a PC. The data is used to populate a MS Word form that then needs to be printed and faxed. Printing and faxing requirements are different for new service requests versus follow-up service requests. In this application a New Service Requests consists of three pages of information, the Follow-Up Service Request has only two pages.

One copy of a new service request needs to be printed on pink paper and stapled, the second copy needs to be printed on blue paper and stapled, and a copy needs to be faxed to the Service Department. The **Canon Printer Driver SDK** is used to make the proper **cassette selections** (preloaded with pink and blue paper, respectively) and to **staple** the documents. The **Canon Fax Driver SDK** is used to select a **cover sheet** and to enter **sender** and **recipient** information for the fax job. Everything is done programmatically and does not require user intervention.

Similarly, a follow-up service request needs to be printed two different ways and faxed to two different recipients. Again, the **Printer Driver SDK** is used to make the proper **cassette selections** (preloaded with green and yellow paper) and to select **three-hole punch** and **double-sided** printing. The **Fax Driver SDK** is used to select a **cover sheet** and to enter **sender** and **recipient** information for the two fax jobs. Again, no user intervention is needed to make the necessary print and fax job settings.



## **Example 2: Streamlined Faxing in Claims Processing**

Scenario: A company processes disability insurance claims. MS Word reports are generated summarizing the history of a claim. The claim history reports are faxed to attorneys affiliated with the company for review. The sender of the fax is the claims processor for the claim.

Workflow is simplified by displaying lists of senders and recipients. Users need to select attorneys from the "Recipient" list. More than one attorney may be selected. Users need to select the claims processor from the "Sender" list. The **Canon Fax Driver SDK** is used to select the **cover sheet**, enter the cover sheet **comment** (claim information), and set the **sender** and **recipient** information.

**Sender** information consists of the claims processor's name, company, fax number, and department. **Recipient** information consists of attorney name, law firm, and fax number. The cover sheet **comment** consists of the claim number and claimant name. The **cover sheet** has the company logo and a pre-scanned signature of the sender. So, a different cover sheet is selected depending on sender.

The user does not need to become involved with the details of sending the fax and navigating the Fax Driver UI.